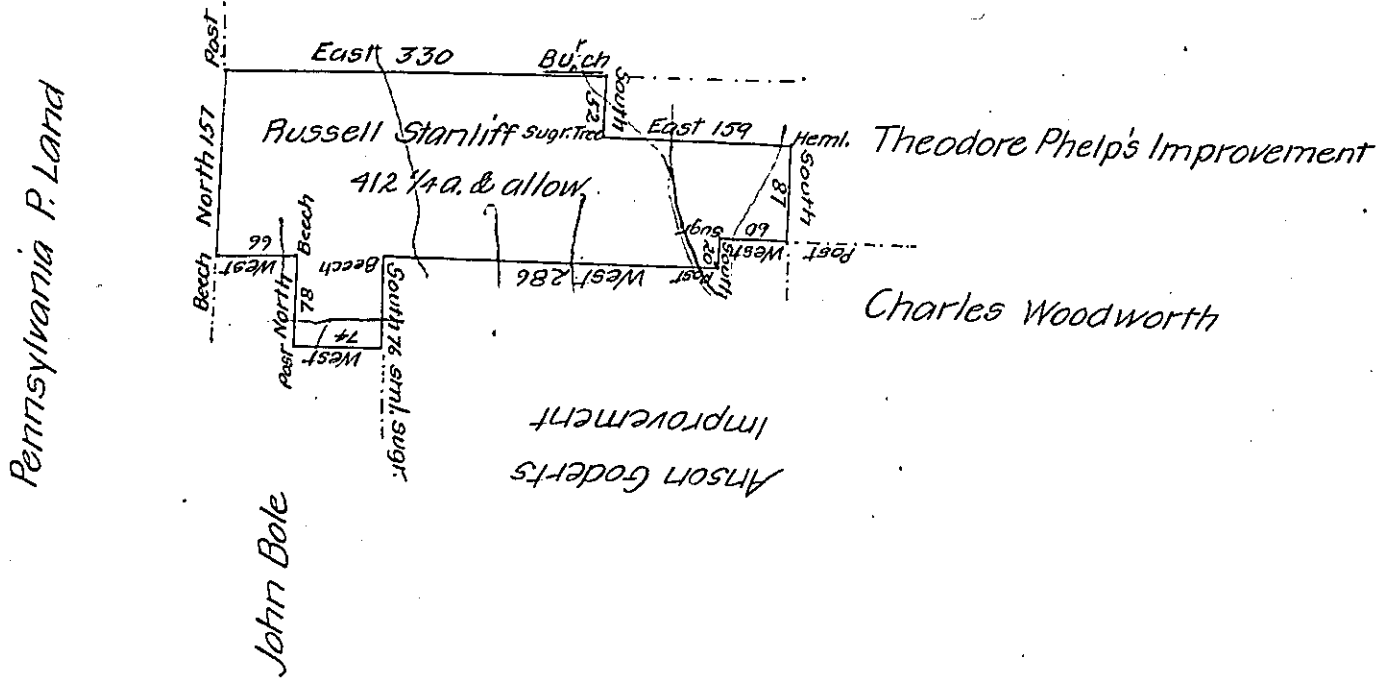


Pennsylvania Population Comp^y Land



The above described Tract of Land Situate on the waters of French Creek in Coniatee Township (formerly Waterford Township) in Erie County Survey'd on the eight day of July 1802 for Russell Starliff by virtue of his actual residence and improvement; and resurvey'd on the twenty fourth day of October 1806 by virtue of his Warrant dated August 14th 1805 Containing four hundred and twelve and one quarter acres and the usual allowance of Six per cent for roads &c.

Thomas Smith D.S.

To Samuel Cochran Esqr. }
 Surveyor General }

IN TESTIMONY that the above is a copy of the original remaining on file in the Department of Internal Affairs of Pennsylvania, made conformably to an Act of Assembly approved the 16th day of February 1833, I have hereunto set my hand and caused the Seal of said Department to be affixed at Harrisburg, this seventh day of March 1907

Isaac D. Brown
 Secretary of Internal Affairs.